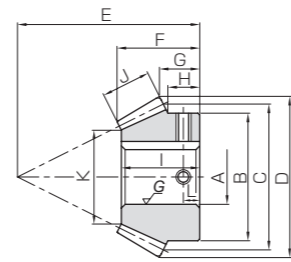
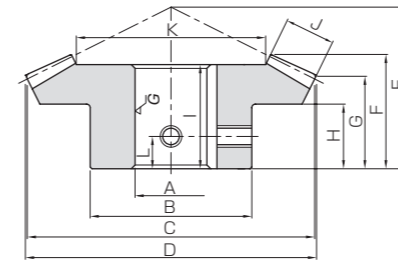




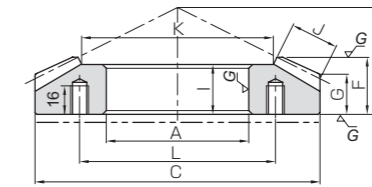
共 通 规 格	
精度等级	JIS B 1704 : 1978 4 级
齿 形	格里森
压 力 角	20°
螺 旋 角	35°
材 料	SCM415
热 处 理	整件渗碳淬火
齿面硬度	55~60HRC



BK



B4

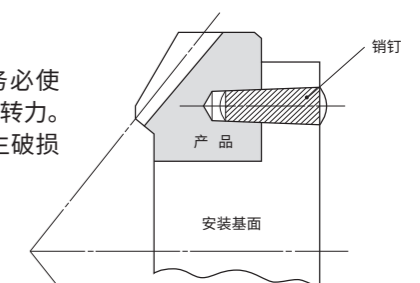


B7

产品型号	齿数比	模数	齿数	螺旋方向	形状	孔径		分度圆直径	齿顶圆直径	组装距离	全长	齿顶距离	轮毂长	孔长
						A _{H7}	B							
MBSA2-3020R MBSB2-3020R MBSA2-2030L MBSB2-2030L	1.5	m2	30	R	B4	20 22	40	60	61.36	40	26.8	21.02	14	23
MBSA2.5-3020R MBSB2.5-3020R MBSA2.5-2030L MBSB2.5-2030L		m2	20	L	BK	15 18	35	40	43.49	45	24.96	16.16	13.33	23
MBSA3-3020R MBSB3-3020R MBSA3-2030L MBSB3-2030L		m2.5	30	R	B4	22 25	48	75	76.74	50	33.6	26.31	18	30
MBSA4-3020R MBSB4-3020R MBSA4-2030L MBSB4-2030L		m2.5	20	L	BK	18 20	43	50	54.43	55	30.08	18.98	15.17	28
MBSA5-3020R MBSB5-3020R MBSA5-2030L MBSB5-2030L		m3	30	R	B4	25 30	60	90	92.21	60	40.34	31.66	21	36
MBSA6-3020R MBSB6-3020R MBSA6-2030L MBSB6-2030L		m3	20	L	BK	22 25	53	60	65.58	65	35.17	21.86	17.67	32.5
MBSA2-4020R MBSB2-4020R MBSA2-2040L MBSB2-2040L		m4	30	R	B4	35 40	75	120	122.91	70	43.99	32.18	21	39
MBSA2.5-4020R MBSB2.5-4020R MBSA2.5-2040L MBSB2.5-2040L		m4	20	L	BK	30 35	70	80	87.34	85	45.53	27.45	21.67	42
MBSA3-4020R MBSB3-4020R MBSA3-2040L MBSB3-2040L		m5	30	R	B7	80	—	150	—	70	35.53	23.8	—	31
MBSA4-4020R MBSB4-4020R MBSA4-2040L MBSB4-2040L		m5	20	L	BK	35 40	87	100	109.2	105	55.05	33.07	25.67	51
MBSA5-4020R MBSB5-4020R MBSA5-2040L MBSB5-2040L		m6	30	R	B7	90	—	180	—	80	38.86	24.37	—	33
MBSA6-4020R MBSB6-4020R MBSA6-2040L MBSB6-2040L		m6	20	L	BK	45 50	105	120	130.48	125	65.57	38.49	30	60
MBSA2-4020R MBSB2-4020R MBSA2-2040L MBSB2-2040L	2	m2	40	R	B4	20 22	45	80	81.06	45	31.83	26.06	18	29
MBSA2.5-4020R MBSB2.5-4020R MBSA2.5-2040L MBSB2.5-2040L		m2	20	L	BK	15 18	35	40	44.2	55	28.16	16.05	13.75	27
MBSA3-4020R MBSB3-4020R MBSA3-2040L MBSB3-2040L		m2.5	40	R	B4	25 28	55	100	101.29	50	33.35	26.29	16	30
MBSA4-4020R MBSB4-4020R MBSA4-2040L MBSB4-2040L		m2.5	20	L	BK	20 22	43	50	55.12	65	31.01	16.28	13.25	29
MBSA5-4020R MBSB5-4020R MBSA5-2040L MBSB5-2040L		m3	40	R	B4	30 35	65	120	121.57	60	39.81	31.57	21	35
MBSA6-4020R MBSB6-4020R MBSA6-2040L MBSB6-2040L		m3	20	L	BK	22 25	53	60	66.03	80	38.9	21.51	18.25	36.5
MBSA2-4020R MBSB2-4020R MBSA2-2040L MBSB2-2040L		m4	40	R	B7	80	—	160	—	60	32.08	22.53	—	28
MBSA2.5-4020R MBSB2.5-4020R MBSA2.5-2040L MBSB2.5-2040L		m4	20	L	BK	30 35	70	80	88.46	100	45.38	22.12	17.5	43
MBSA3-4020R MBSB3-4020R MBSA3-2040L MBSB3-2040L		m5	40	R	B7	90	—	200	—	70	35.2	22.98	—	30
MBSA4-4020R MBSB4-4020R MBSA4-2040L MBSB4-2040L		m5	20	L	BK	40 45	87	100	109.91	125	57.11	27.48	21.75	53.5
MBSA5-4020R MBSB5-4020R MBSA5-2040L MBSB5-2040L		m6	40	R	B7	110	—	240	—	80	37.89	23.62	—	32
MBSA6-4020R MBSB6-4020R MBSA6-2040L MBSB6-2040L		m6	20	L	BK	50 55	105	120	132.04	150	67.8	33.01	26.25	64

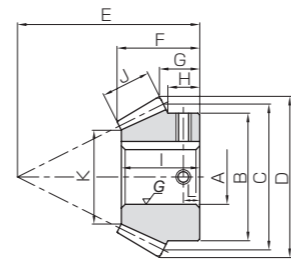
齿宽	支撑面直径	键槽 宽度×深度	螺孔 尺寸	容许转矩 (N·m)		容许转矩 (kgf·m)		侧隙 (mm)	质量 (kg)	产品型号
				弯曲强度	齿面强度	弯曲强度	齿面强度			
11	37.56	6 x 2.8 6 x 2.8	2-M5 2-M5	7	34.4	38.4	3.51	3.91	0.06~0.16	MBSA2-3020R MBSB2-3020R
11	24.34	5 x 2.3 6 x 2.8	2-M4 2-M5	6.5	23.5	25.6	2.39	2.61		MBSA2-2030L MBSB2-2030L
14	48.01	6 x 2.8 8 x 3.3	2-M5 2-M6	9	68.0	76.8	6.93	7.84	0.07~0.17	MBSA2.5-3020R MBSB2.5-3020R
14	31.02	6 x 2.8 6 x 2.8	2-M5 2-M5	7.5	46.4	51.2	4.73	5.22		MBSA2.5-2030L MBSB2.5-2030L
17	57.14	8 x 3.3 8 x 3.3	2-M6 2-M6	11	118	135	12.1	13.8	0.08~0.18	MBSA3-3020R MBSB3-3020R
17	36.2	6 x 2.8 8 x 3.3	2-M5 2-M6	9	80.7	90.1	8.23	9.19		MBSA3-2030L MBSB3-2030L
23	76.72	10 x 3.3 12 x 3.3	2-M8 2-M8	10	283	328	28.9	33.5	0.12~0.27	MBSA4-3020R MBSB4-3020R
23	48.07	8 x 3.3 10 x 3.3	2-M6 2-M8	11	193	219	19.7	22.3		MBSA4-2030L MBSB4-2030L
28	97.36	—	6-M10	110	544	637	55.4	64.9	0.14~0.34	MBSA5-3020R MBSB5-3020R
28	62.04	10 x 3.3 12 x 3.3	2-M8 2-M8	13	371	425	37.8	43.3		MBSA5-2030L MBSB5-2030L
34	115.61	—	6-M10	120	927	1120	94.6	114	0.16~0.36	MBSA6-3020R MBSB6-3020R
34	72.41	14 x 3.8 14 x 3.8	2-M10 2-M10	15	633	745	64.5	76.0		MBSA6-2030L MBSB6-2030L
14	52.7	6 x 2.8 6 x 2.8	2-M5 2-M5	9	59.6	69.6	6.08	7.09	0.06~0.16	MBSA2-4020R MBSB2-4020R
14	25.39	5 x 2.3 6 x 2.8	2-M4 2-M5	7	29.9	34.8	3.05	3.55		MBSA2-2040L MBSB2-2040L
17	66.99	8 x 3.3 8 x 3.3	2-M6 2-M6	8	114	135	11.7	13.8	0.07~0.17	MBSA2.5-4020R MBSB2.5-4020R
17	29.97	6 x 2.8 6 x 2.8	2-M5 2-M5	7	57.3	67.6	5.84	6.89		MBSA2.5-2040L MBSB2.5-2040L
20	80.28	8 x 3.3 10 x 3.3	2-M6 2-M8	11	195	233	19.9	23.7	0.08~0.18	MBSA3-4020R MBSB3-4020R
20	36.56	6 x 2.8 8 x 3.3	2-M5 2-M6	9.5	97.7	116	9.97	11.9		MBSA3-2040L MBSB3-2040L
27	107.63	—	6-M10	110	466	564	47.5	57.5	0.12~0.27	MBSA4-4020R MBSB4-4020R
27	51.25	8 x 3.3 10 x 3.3	2-M6 2-M8	9	234	282	23.8	28.8		MBSA4-2040L MBSB4-2040L
34	133.97	—	6-M10	120	915	1120	93.3	114	0.14~0.34	MBSA5-4020R MBSB5-4020R
34	61.95	12 x 3.8 14 x 3.8	2-M8 2-M10	11	458	559	46.7	57.0		MBSA5-2040L MBSB5-2040L
40	162.56	—	6-M10	140	1530	1920	156	196	0.16~0.36	MBSA6-4020R MBSB6-4020R
40	77.11	14 x 3.8 16 x 4.3	2-M10 2-M10	14	766	961	78.1	97.9		MBSA6-2040L MBSB6-2040L

B7 形状 (环形) 的产品在安装时, 请务必使用定位销将齿轮固定在基面上, 以抵消旋转力。仅使用螺栓来承受旋转力时, 螺栓有发生破损的可能性。

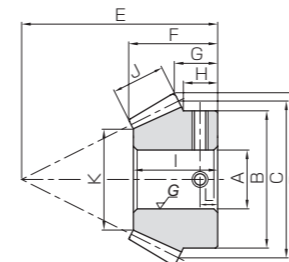




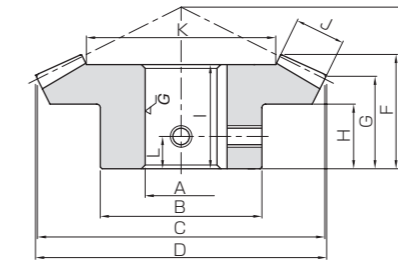
共通规格	
精度等级	JIS B 1704 : 1978 4级
齿形	格里森
压力角	20°
螺旋角	35°
材料	SCM415
热处理	整件渗碳淬火
齿面硬度	55~60HRC



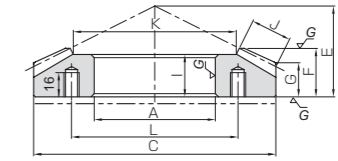
BK



BT



B4



B7

产品型号	齿数比	模数	齿数	螺旋方向	形状	孔径	轮毂径	分度圆直径	齿顶圆直径	组装距离	全长	齿顶距离	轮毂长	孔长
						A _{H7}	B	C	D	E	F	G	H	I
MBSA2-4515R MBSB2-4515R	3	m2	45	R	B4	20	48	90	90.66	40	30.01	25.99	18	27
22						26	30	34.59	55	23.78	10.77	9.33	22.5	
MBSA2-1545L MBSB2-1545L		m2	15	L	BT BK	10	26	30	34.59	55	23.78	10.77	9.33	22.5
12						26	30	34.59	55	23.78	10.77	9.33	22.5	
MBSA2.5-4515R MBSB2.5-4515R		m2.5	45	R	B4	22	55	112.5	113.28	45	32.43	27.42	18	28
25						55	112.5	113.28	45	32.43	27.42	18	28	
MBSA2.5-1545L MBSB2.5-1545L		m2.5	15	L	BK	12	32	37.5	43.06	70	30.51	14.68	12.84	29
15						32	37.5	43.06	70	30.51	14.68	12.84	29	
MBSA3-4515R MBSB3-4515R		m3	45	R	B4	30	65	135	136.03	55	39.94	34.05	22	35
32						65	135	136.03	55	39.94	34.05	22	35	
MBSA3-1545L MBSB3-1545L		m3	15	L	BK	18	38	45	52	85	38.12	18.67	16.33	36.5
20						38	45	52	85	38.12	18.67	16.33	36.5	
MBSA4-4515R MBSB4-4515R	m4	45	R	B7	80	—	180	—	50	28.85	22.14	—	25	
22					52	60	69.24	110	47.51	21.54	18.67	45.5		
MBSA4-1545L MBSB4-1545L	m4	15	L	BK	22	52	60	69.24	110	47.51	21.54	18.67	45.5	
25					52	60	69.24	110	47.51	21.54	18.67	45.5		
MBSA5-4515R MBSB5-4515R	m5	45	R	B7	90	—	225	—	60	33.57	25.16	—	28	
28					65	75	86.55	135	56.89	24.43	20.83	54		
MBSA5-1545L MBSB5-1545L	m5	15	L	BK	28	65	75	86.55	135	56.89	24.43	20.83	54	
32					65	75	86.55	135	56.89	24.43	20.83	54		
MBSA6-4515R MBSB6-4515R	m6	45	R	B7	110	—	270	—	70	38.28	28.05	—	32	
35					78	90	103.13	160	66.39	27.19	23	63		
MBSA6-1545L MBSB6-1545L	m6	15	L	BK	35	78	90	103.13	160	66.39	27.19	23	63	
40					78	90	103.13	160	66.39	27.19	23	63		

齿宽	支撑面直径	键槽 宽度×深度	螺孔 尺寸	L	容许转矩 (N·m)		容许转矩 (kgf·m)		侧隙 (mm)	质量 (kg)	产品型号
					弯曲强度	齿面强度	弯曲强度	齿面强度			
14	61.82	6×2.8 6×2.8	2-M5 2-M5	9	67.8	61.3	6.91	6.25	0.06~0.16	0.61 0.60	MBSA2-4515R MBSB2-4515R
14	16.46	— 4×1.8	2-M4 2-M4	5	21.7	20.4	2.22	2.08		0.081 0.073	MBSA2-1545L MBSB2-1545L
17	77.83	6×2.8 8×3.3	2-M5 2-M6	9	130	119	13.3	12.1		1.01 0.98	MBSA2.5-4515R MBSB2.5-4515R
17	21.48	4×1.8 5×2.3	2-M4 2-M4	7	41.6	39.6	4.24	4.04	0.07~0.17	0.16 0.15	MBSA2.5-1545L MBSB2.5-1545L
21	92.39	8×3.3 10×3.3	2-M6 2-M8	11	229	211	23.3	21.6		1.78 1.75	MBSA3-4515R MBSB3-4515R
21	26.18	6×2.8 6×2.8	2-M5 2-M5	9	73.3	70.5	7.48	7.18	0.08~0.18	0.26 0.24	MBSA3-1545L MBSB3-1545L
28	124.3	—	6-M10	110	542	508	55.3	51.8		3.93	MBSA4-4515R
28	35.91	6×2.8 8×3.3	2-M5 2-M6	10	174	169	17.7	17.3	0.12~0.27	0.63 0.58	MBSA4-1545L MBSB4-1545L
35	154.88	—	6-M10	120	1060	1000	108	102		7.38	MBSA5-4515R
35	42.64	8×3.3 10×3.3	2-M6 2-M8	11	339	334	34.6	34.1	0.14~0.34	1.16 1.07	MBSA5-1545L MBSB5-1545L
42	186.12	—	6-M10	140	1790	1740	183	178		12.0	MBSA6-4515R
42	52.37	10×3.3 12×3.3	2-M8 2-M8	12	575	581	58.6	59.3	0.16~0.36	1.90 1.75	MBSA6-1545L MBSB6-1545L

B7形状(环形)的产品在安装时,请务必使用定位销将齿轮固定在基面上,以抵消旋转力。仅使用螺栓来承受旋转力时,螺栓有发生破损的可能性。

